

Manufacturing Facility for Lease

201 Tank Road
Jesup, Georgia 31545



Available property
is outlined by a
yellow dotted line
and marked by a ★

Ports

Brunswick: Colonel's Island – 50 Miles & Mayor's Point – 45 Miles

Jacksonville: Blount Island – 100 Miles, Dames Point – 110 Miles, Talleyrand – 105 Miles

Savannah: Garden City – 70 Miles & Ocean Terminal – 70 Miles

This 43-acre industrially zoned property for lease includes three buildings with a total square footage of 163,380 square feet. Buildings 1 and 2 contain total 128,380 sf and house nine 10, 15 and 25 ton Sheppard Niles and OMI cranes and ceiling heights up to 49 feet, with a 400 ft long rail spur on the Norfolk Southern rail line. Building 3 is a one-story metal building with 36,868 sf and a 24' ceiling height and houses 1, 2 and 5 ton OMI, Columbus McKinnon and Coffing Hoist cranes. In addition, a modular office unit and parking space are included. All utilities to the leased premises, including electricity, water and septic, are in place and separately metered.

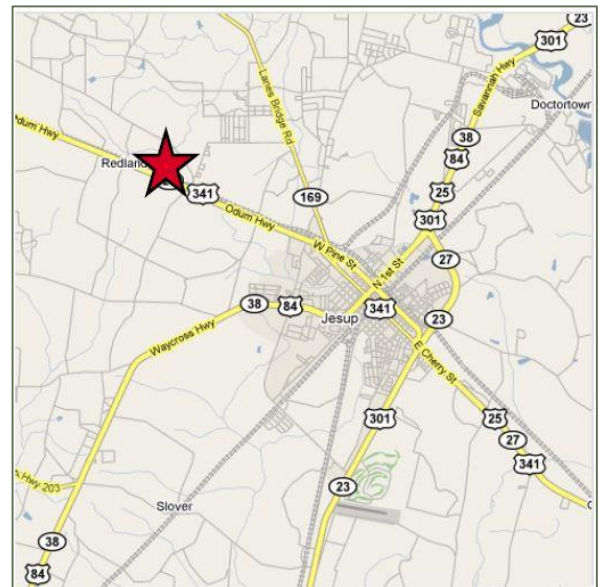


FOR MORE INFORMATION, CONTACT:

Williams Brothers Trucking
Post Office Box 188
Hazlehurst, GA 31539-0188

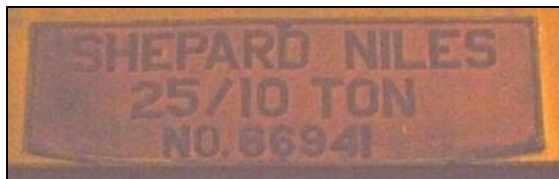
Roger Williams, President
roger@wbtus.com
(912) 424-4777

Roger Williams II
rogerii@wbtus.com
(912) 424-4770

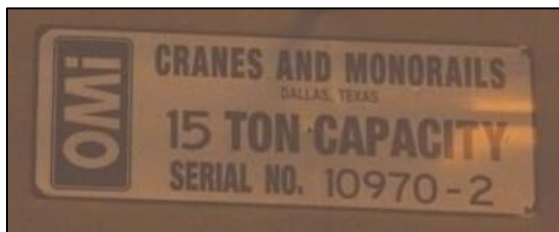


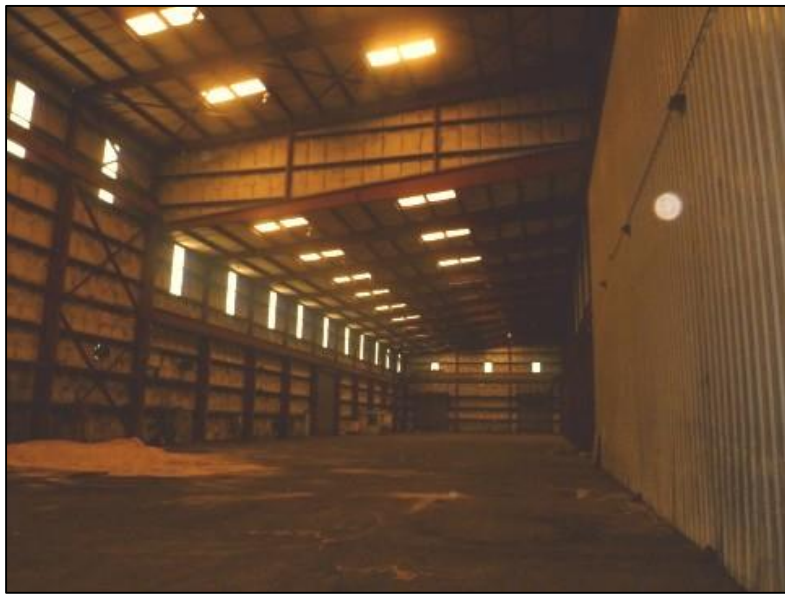


Property is located on Norfolk Southern's main rail line with a passing track within a mile of the plant.



Buildings have 10 – 15 ton overhead cranes and ceiling heights up to 49 ft.





This property is a large industrial site with three main buildings totaling 1 63,380 sq ft located on approximately 43 acres of developed land. Also included is a modular office building and parking lot.

The two newest buildings are approximately 64,000 sq ft each and house a 400 ft rail spur with 200 ft inside each building. Rail spurs are located on Norfolk Southern's main line with a passing track located within one mile of the plant.

