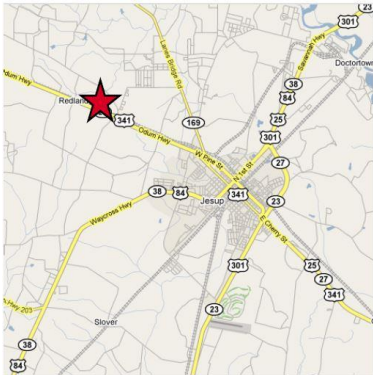


Manufacturing Facility For Sale

111 Tank Road
Jesup, Georgia
63.12 Acres

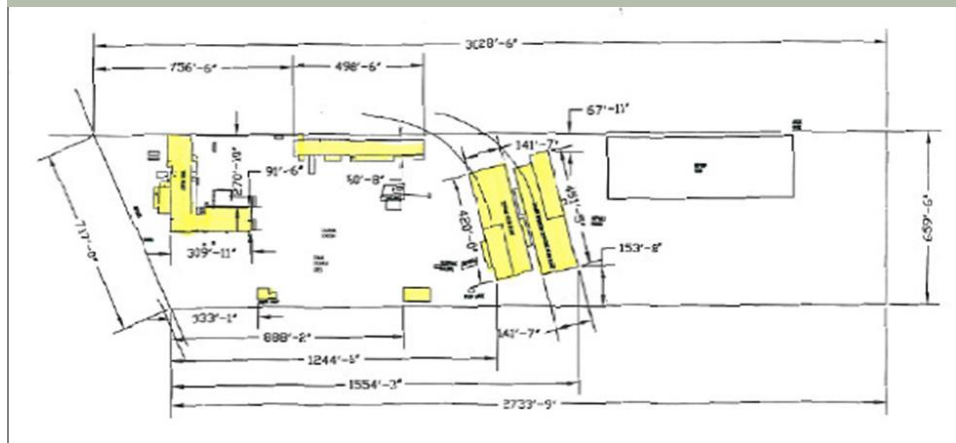


nerdwallet

**BEST PLACE TO
START A
BUSINESS**

2015

Site Plan



**FOR MORE INFORMATION,
CONTACT:**

Dell Keith

Executive Director

Wayne County Industrial

Development Authority

Post Office Box 513

Jesup, GA 31598-0513

(912) 415-8080 - Office

(912) 294-1282 - Cell

dkeith@connectinwayne.com

www.connectinwayne.com

- 63.12 acre tract located on US Highway 341/25
- 212,682 Total Building SF
- Four Main Buildings
- Large Stable Yard
- Freestanding Maintenance and Office Buildings
- Situated on Norfolk Southern rail line – two spurs
- Well and Septic
- Zoned Industrial