

Wayne County Industrial Park II

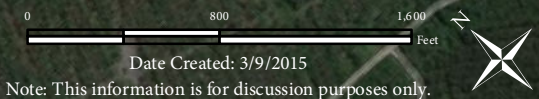
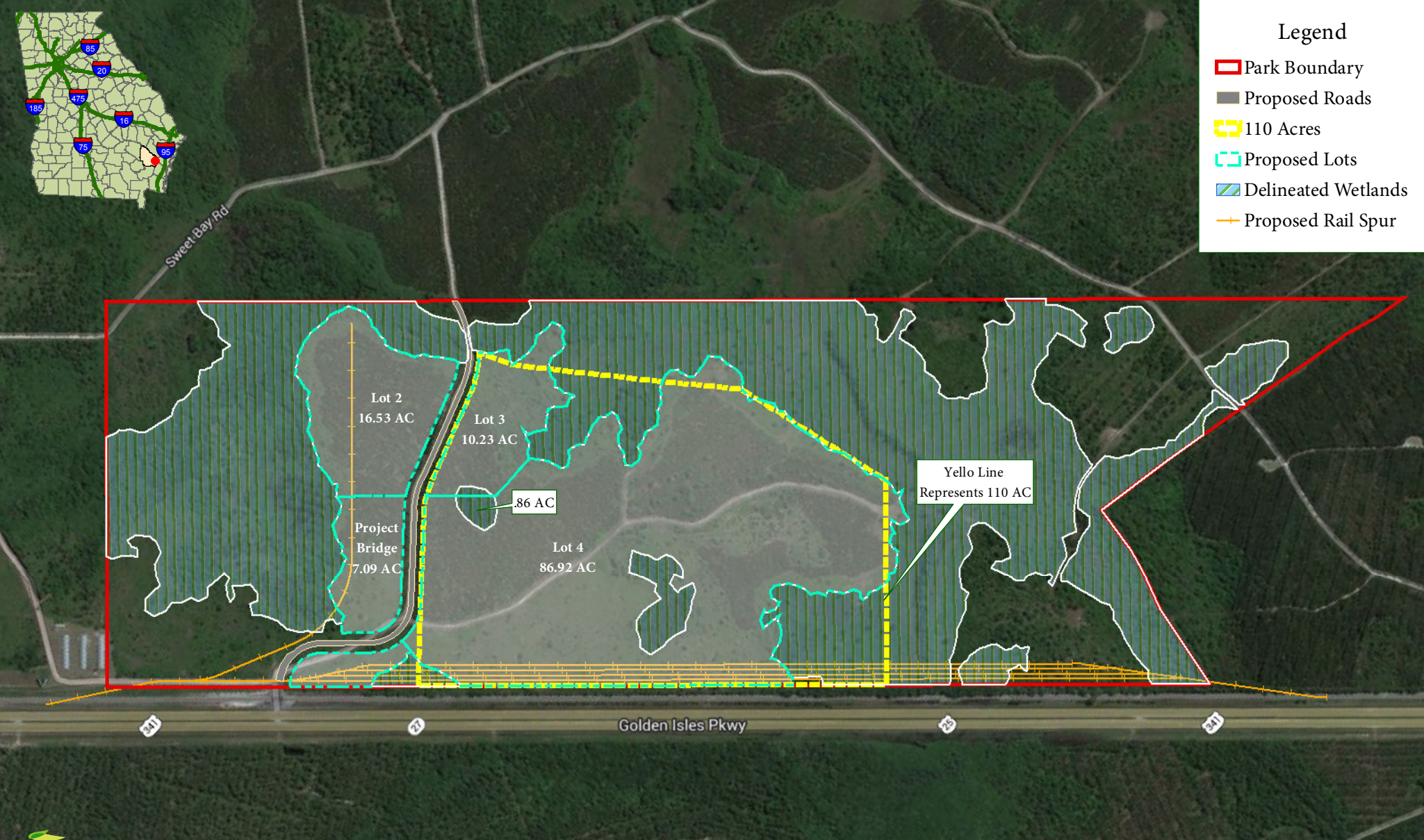
Wayne County - Conceptual Master Plan - Option 1



Okefenokee Rural Electric Membership Corporation

Legend

- Park Boundary
- Proposed Roads
- 110 Acres
- Proposed Lots
- Delineated Wetlands
- Proposed Rail Spur



Date Created: 3/9/2015
Note: This information is for discussion purposes only.
All information provided by GEMC GIS, Communities, and published sources. Map data ©2015 Google